

Installing Altaro Hyper-V Backup on Server Core & Hyper-V Server

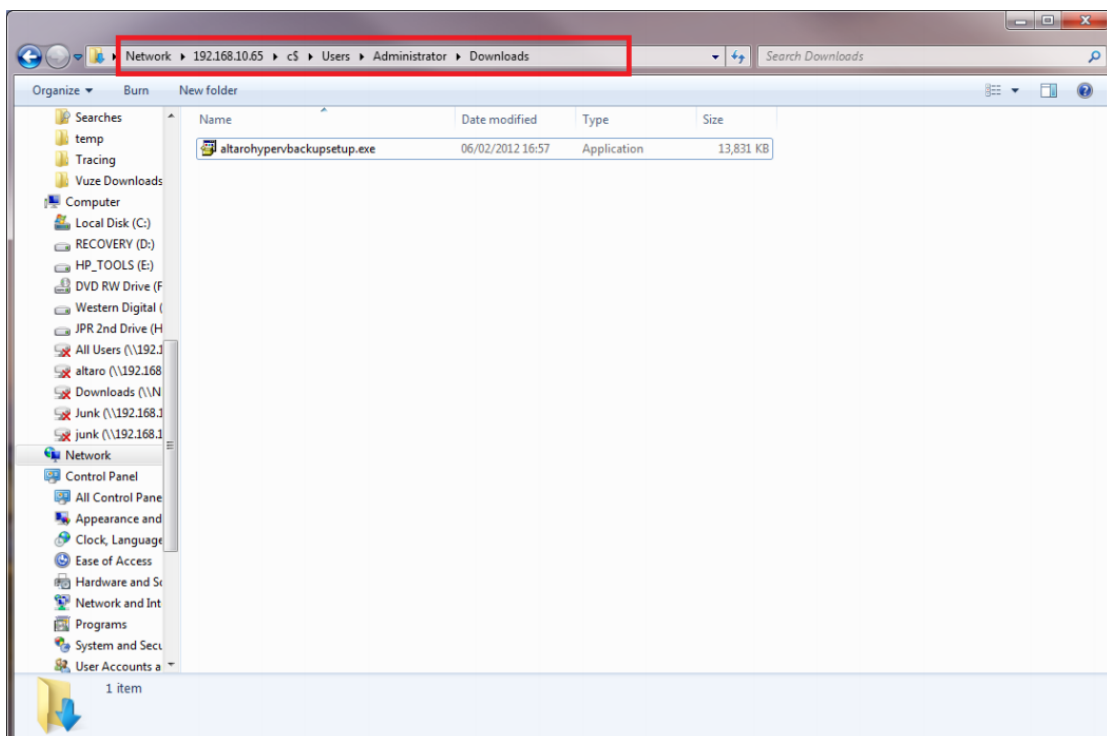
This guide covers installing Altaro Hyper-V Backup on Server Core/Hyper-V Server; to install on WS2008 R2, WS2012 and WS2012 R2 check out the [installation & user guide](#).

Installing on Server Core or Hyper-V Server OS's requires a few different steps before the installation owing to the different nature of the OS interface. Please See our [minimum requirements](#) before proceeding.

Follow this guide to install on Server Core/Hyper-V Server:

- Download the Altaro Hyper-V Backup installation setup file from www.altaro.com
- Copy it onto the core server by simply opening a Windows Explorer window and typing in the Windows Share location of the Core machine, followed by the drive letter of the system drive (typically "C"), followed by the dollar sign. The format in other words is [\\IPAddress\C\\$](#) or [\\ServerName\C\\$](#)

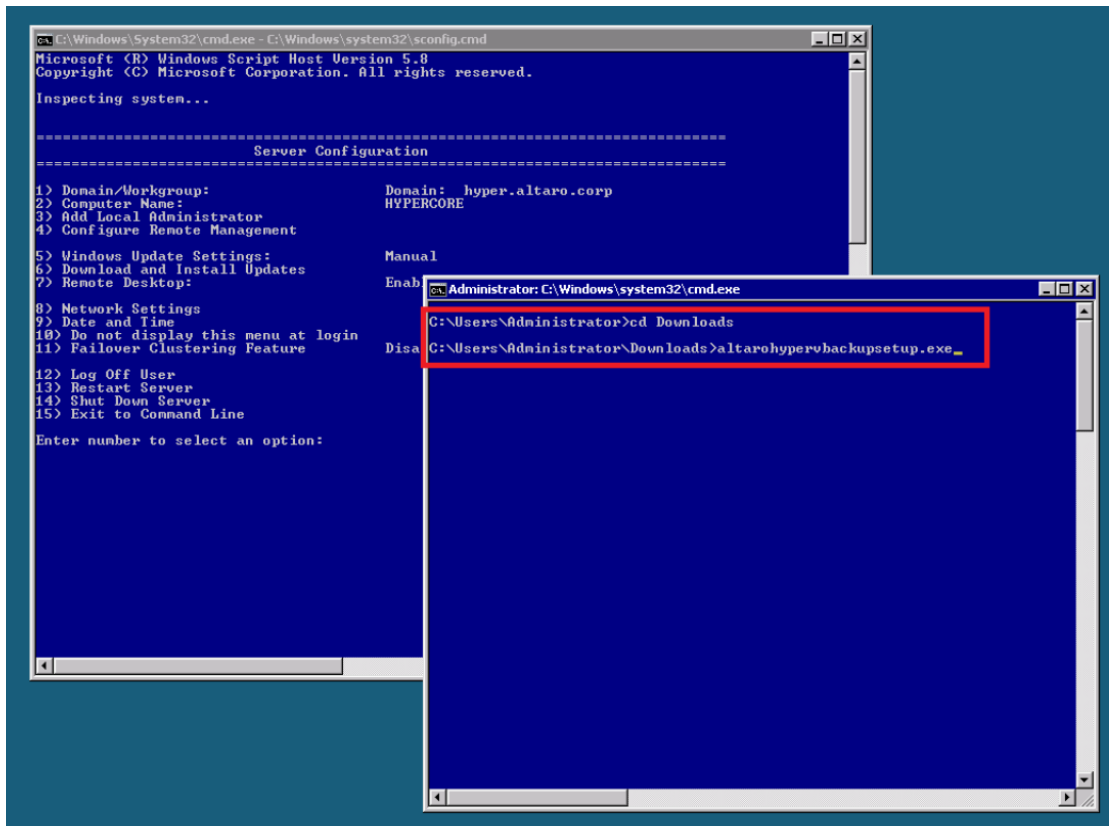
This can be seen in the image below, where the IP address is used:



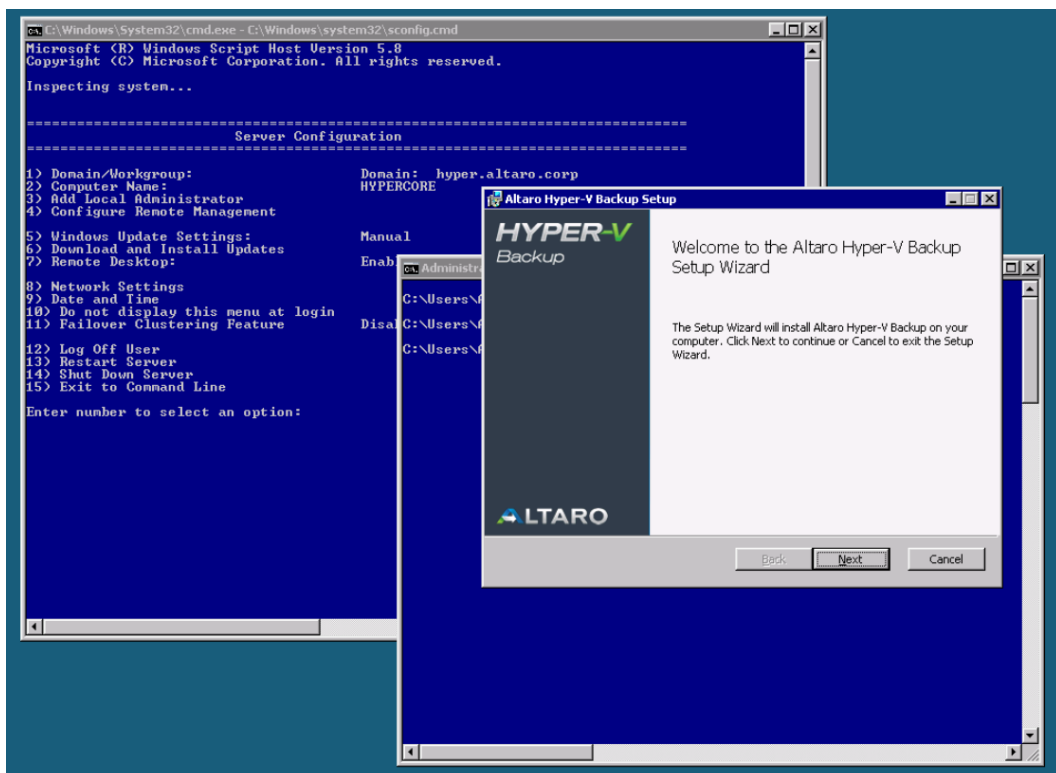
As shown in the example above, choose a folder where to paste the installer (for example C:\Users\Administrator\Downloads) and click paste.

- Switch to the Server Core machine and open a command prompt

- Using the “cd” command, change to the directory where you pasted the file in Step 2 and run the installer setup command as shown in the image below:



- The installation will begin normally as shown below:



- As from this point onwards the procedure is identical to the one described in the Altaro Hyper-V Backup User Guide, which can be found on <http://support.altaro.com>